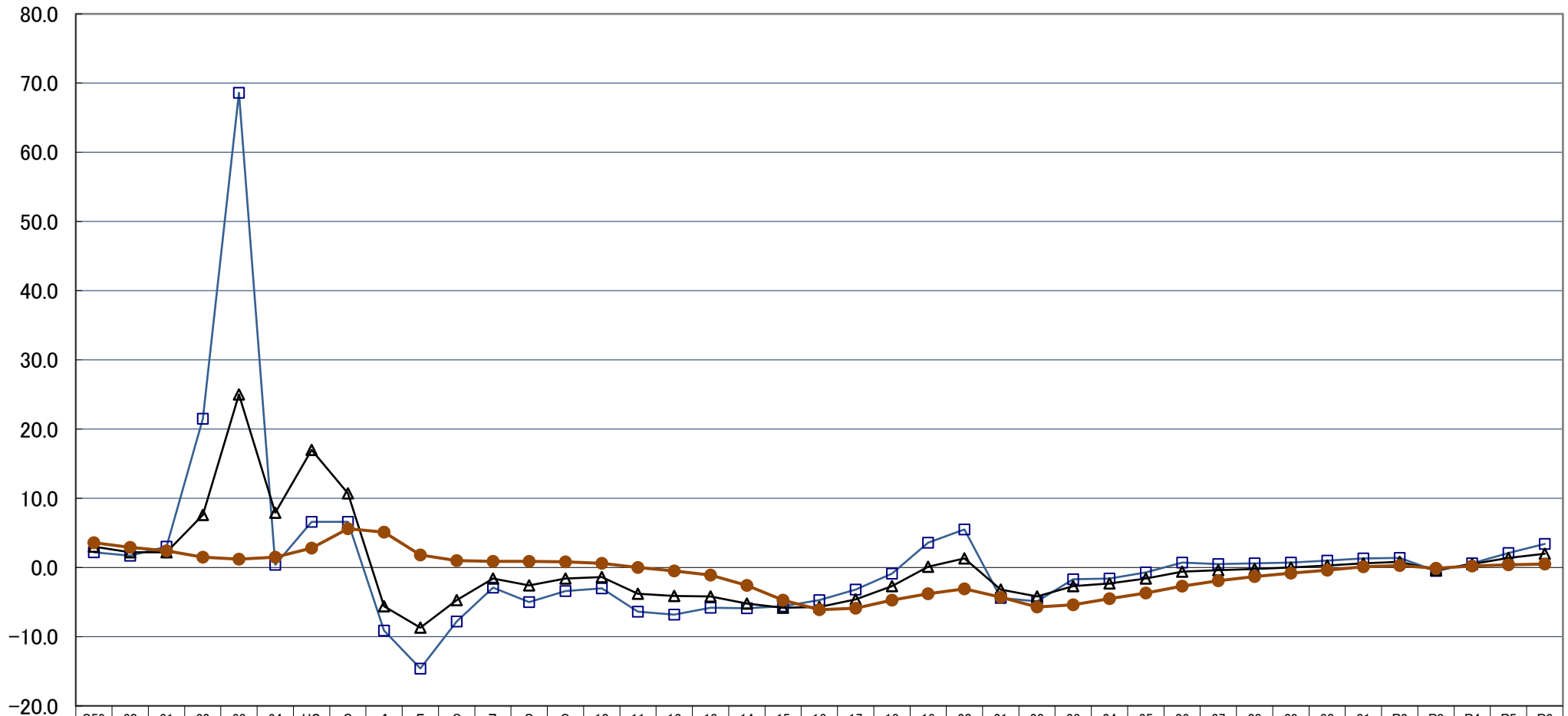


地価公示 対前年平均変動率推移(住宅地)

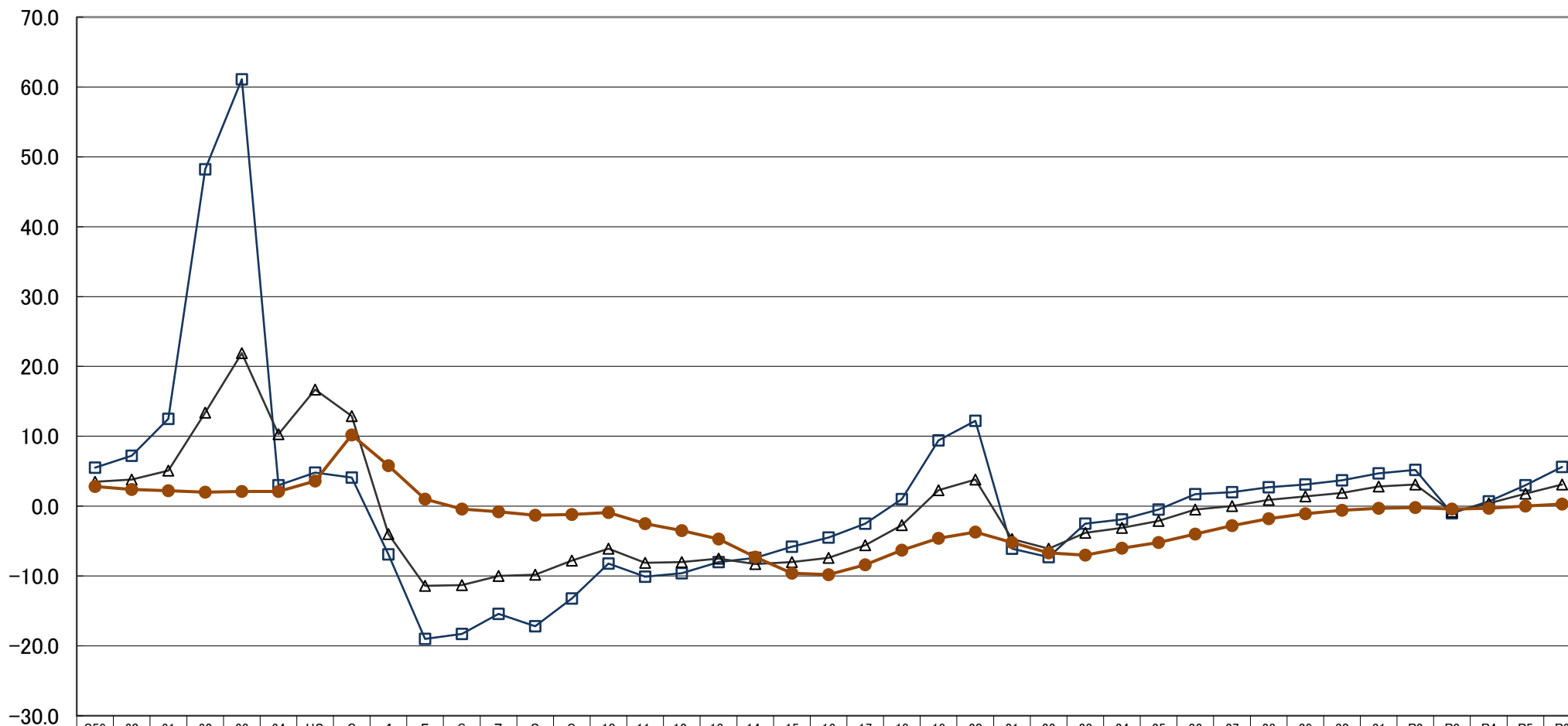
変動率 %



	S59	60	61	62	63	64	H2	3	4	5	6	7	8	9	10	11	12	13	14	15	16	17	18	19	20	21	22	23	24	25	26	27	28	29	30	31	R2	R3	R4	R5	R6
東京圏	2.2	1.7	3.0	21.5	68.6	0.4	6.6	6.6	-9.1	-14.6	-7.8	-2.9	-5.0	-3.4	-3.0	-6.4	-6.8	-5.8	-5.9	-5.6	-4.7	-3.2	-0.9	3.6	5.5	-4.4	-4.9	-1.7	-1.6	-0.7	0.7	0.5	0.6	0.7	1.0	1.3	1.4	-0.5	0.6	2.1	3.4
全国	3.0	2.2	2.2	7.6	25.0	7.9	17.0	10.7	-5.6	-8.7	-4.7	-1.6	-2.6	-1.6	-1.4	-3.8	-4.1	-4.2	-5.2	-5.8	-5.7	-4.6	-2.7	0.1	1.3	-3.2	-4.2	-2.7	-2.3	-1.6	-0.6	-0.4	-0.2	0.0	0.3	0.6	0.8	-0.4	0.5	1.4	2.0
山口県	3.6	2.9	2.4	1.5	1.2	1.5	2.8	5.6	5.1	1.8	1.0	0.9	0.9	0.8	0.6	0.0	-0.5	-1.1	-2.6	-4.7	-6.1	-5.9	-4.7	-3.8	-3.1	-4.3	-5.7	-5.4	-4.5	-3.7	-2.7	-1.9	-1.3	-0.8	-0.4	0.1	0.3	-0.1	0.2	0.4	0.5

地価公示 対前年平均変動率推移(商業地)

変動率 %



	S59	60	61	62	63	64	H2	3	4	5	6	7	8	9	10	11	12	13	14	15	16	17	18	19	20	21	22	23	24	25	26	27	28	29	30	31	R2	R3	R4	R5	R6
東京圏	5.5	7.2	12.5	48.2	61.1	3.0	4.8	4.1	-6.9	-19.0	-18.3	-15.4	-17.2	-13.2	-8.2	-10.1	-9.6	-8.0	-7.4	-5.8	-4.5	-2.5	1.0	9.4	12.2	-6.1	-7.3	-2.5	-1.9	-0.5	1.7	2.0	2.7	3.1	3.7	4.7	5.2	-1.0	0.7	3.0	5.6
全国	3.5	3.8	5.1	13.4	21.9	10.3	16.7	12.9	-4.0	-11.4	-11.3	-10.0	-9.8	-7.8	-6.1	-8.1	-8.0	-7.5	-8.3	-8.0	-7.4	-5.6	-2.7	2.3	3.8	-4.7	-6.1	-3.8	-3.1	-2.1	-0.5	0.0	0.9	1.4	1.9	2.8	3.1	-0.8	0.4	1.8	3.1
山口県	2.8	2.4	2.2	2.0	2.1	2.1	3.6	10.2	5.8	1.0	-0.4	-0.8	-1.3	-1.2	-0.9	-2.5	-3.5	-4.7	-7.3	-9.6	-9.8	-8.4	-6.3	-4.6	-3.7	-5.2	-6.7	-7.0	-6.0	-5.2	-4.0	-2.8	-1.8	-1.1	-0.6	-0.3	-0.2	-0.4	-0.3	0.0	0.3

指数

地価公示 地価推移(住宅地) 指数S58=100

300.0

250.0

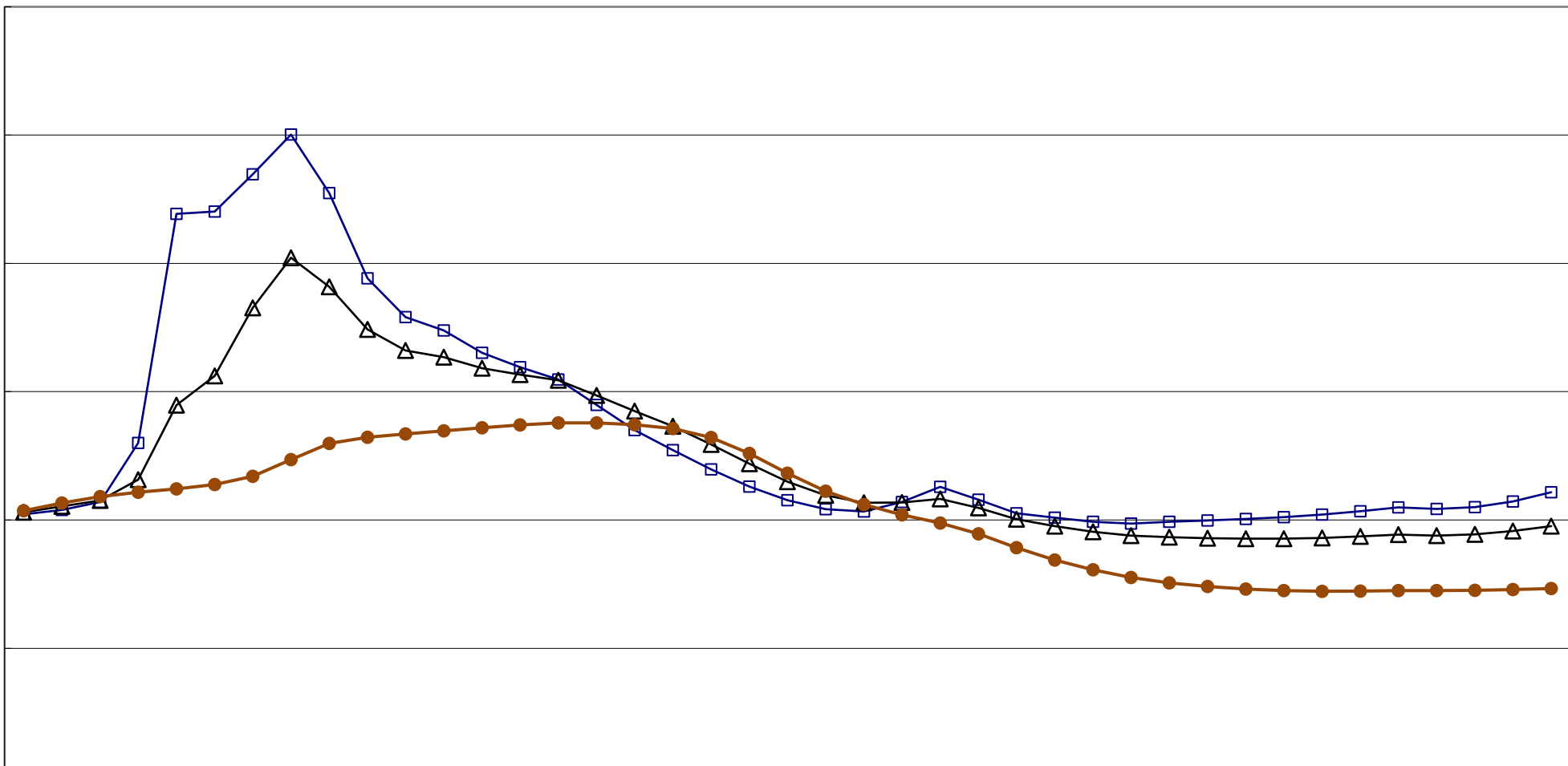
200.0

150.0

100.0

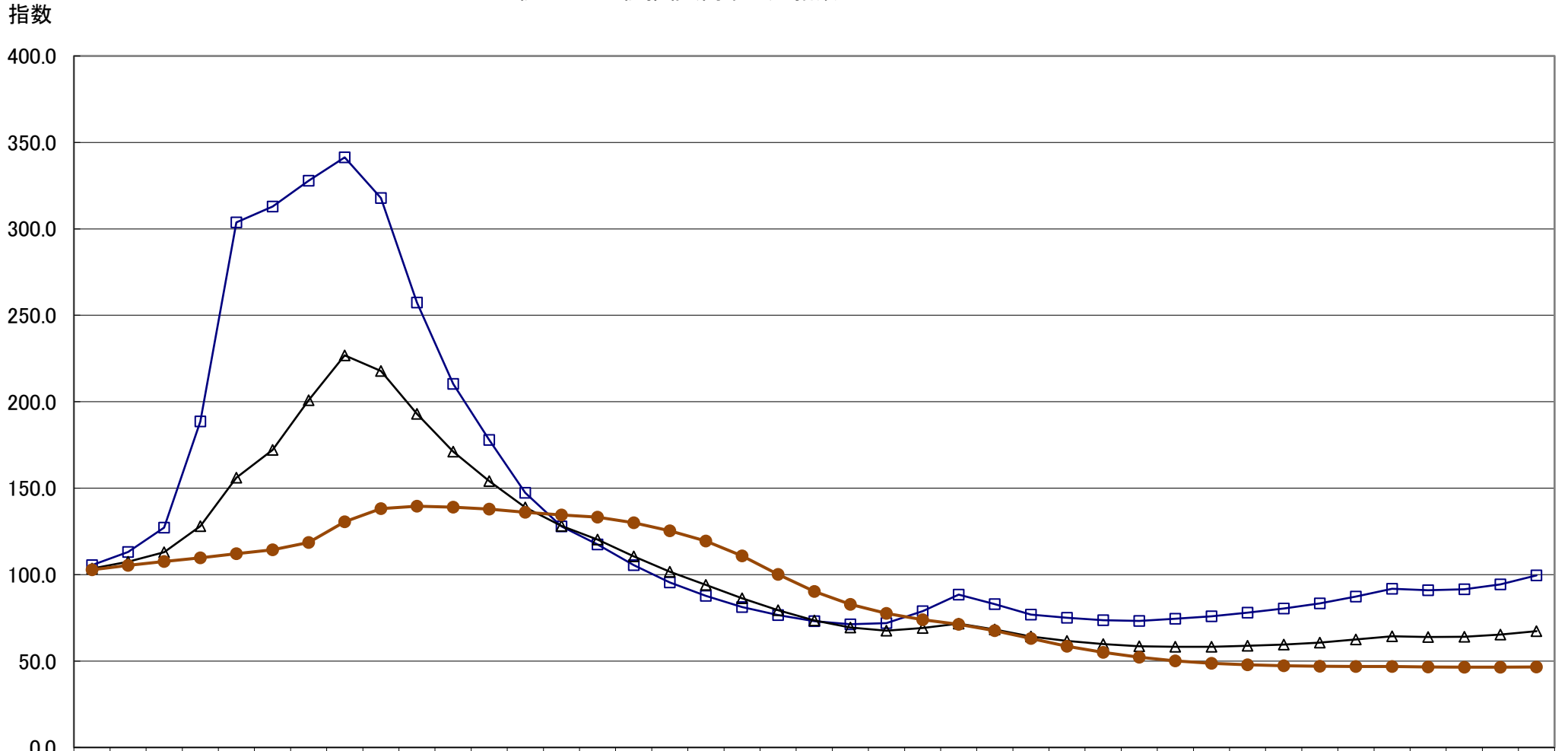
50.0

0.0



	S59	60	61	62	63	64	H2	3	4	5	6	7	8	9	10	11	12	13	14	15	16	17	18	19	20	21	22	23	24	25	26	27	28	29	30	31	R2	R3	R4	R5	R6
—□— 東京圏	102.2	103.9	107.1	130.1	219.3	220.2	234.7	250.2	227.4	194.2	179.1	173.9	165.2	159.6	154.8	144.9	135.0	127.2	119.7	113.0	107.7	104.2	103.3	107.0	112.9	107.9	102.6	100.9	99.3	98.6	99.3	99.8	100.4	101.1	102.1	103.4	104.9	104.3	105.0	107.2	110.8
—▲— 全国	103.0	105.3	107.6	115.8	144.7	156.1	182.7	202.2	190.9	174.3	166.1	163.4	159.2	156.6	154.4	148.6	142.5	136.5	129.4	121.9	114.9	109.7	106.7	106.8	108.2	104.7	100.3	97.6	95.4	93.9	93.3	92.9	92.7	93.0	93.6	94.3	93.9	94.4	95.7	97.6	
—●— 山口県	103.6	106.6	109.2	110.8	112.1	113.8	117.0	123.6	129.9	132.2	133.5	134.7	135.9	137.0	137.8	137.1	135.6	132.1	125.9	118.2	111.2	106.0	102.0	98.8	94.6	89.2	84.4	80.6	77.6	75.5	74.1	73.1	72.5	72.2	72.3	72.5	72.4	72.6	72.9	73.2	

地価公示 地価推移(商業地) 指数S58=100



	S59	60	61	62	63	64	H2	3	4	5	6	7	8	9	10	11	12	13	14	15	16	17	18	19	20	21	22	23	24	25	26	27	28	29	30	31	R2	R3	R4	R5	R6
東京圏	105.5	113.1	127.2	188.6	303.8	312.9	327.9	341.3	317.8	257.4	210.3	177.9	147.3	127.9	117.4	105.5	95.4	87.8	81.3	76.6	73.1	71.3	72.0	78.8	88.4	83.0	76.9	75.0	73.6	73.2	74.5	75.9	78.0	80.4	83.4	87.3	91.8	90.9	91.6	94.3	99.6
全国	103.5	107.4	112.9	128.0	156.1	172.2	200.9	226.8	217.8	192.9	171.1	154.0	138.9	128.1	120.3	110.5	101.7	94.1	86.3	79.4	73.5	69.4	67.5	69.0	71.7	68.3	64.1	61.7	59.8	58.5	58.2	58.2	58.8	59.6	60.7	62.4	64.4	63.8	64.1	65.2	67.3
山口県	102.8	105.3	107.6	109.7	112.0	114.4	118.5	130.6	138.2	139.6	139.0	137.9	136.1	134.5	133.2	129.9	125.4	119.5	110.8	100.1	90.3	82.7	77.5	73.9	71.2	67.5	63.0	58.6	55.1	52.2	50.1	48.7	47.8	47.3	47.0	46.9	46.8	46.6	46.5	46.5	46.6