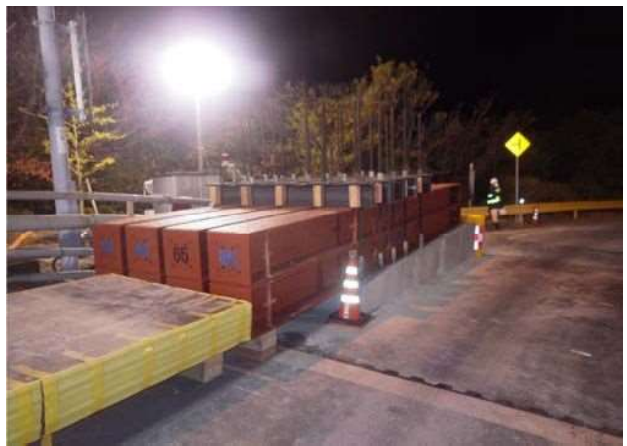


## 參考資料

# 応急工事 状況写真



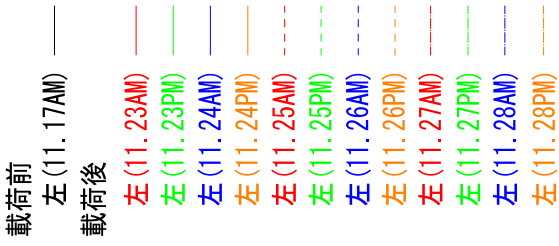
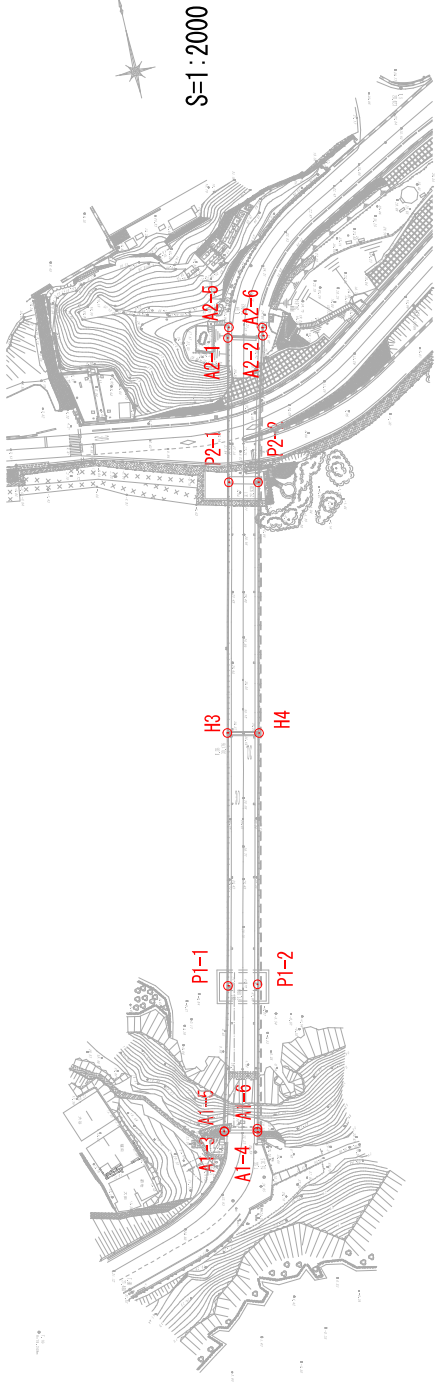




# モニタリング結果

# 定期縦断測量

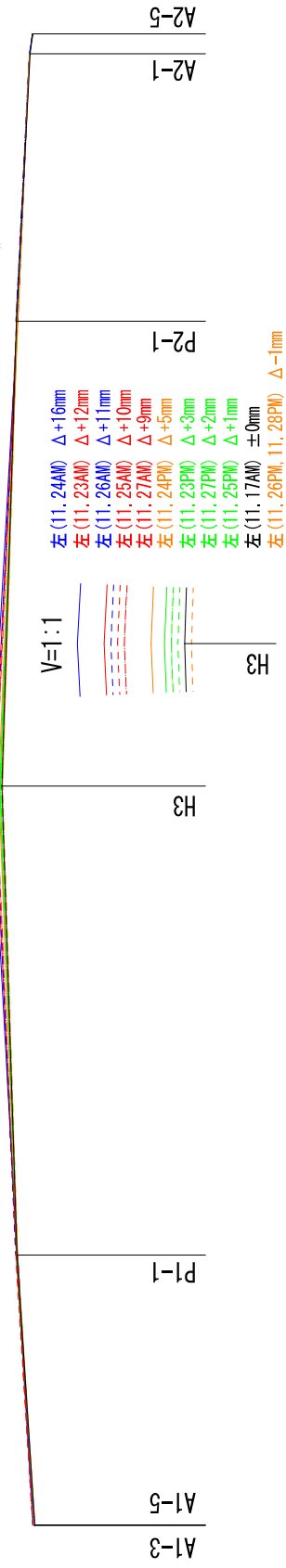
上関大橋動態観測 縦断面図  
令和2年11月23日～11月28日



(至長島)

V=1:10  
H=1:1000

(至室津)



左 (11.24AM)  $\Delta +16\text{mm}$

左 (11.23AM)  $\Delta +12\text{mm}$

左 (11.26AM)  $\Delta +11\text{mm}$

左 (11.25AM)  $\Delta +10\text{mm}$

左 (11.27AM)  $\Delta +9\text{mm}$

左 (11.24PM)  $\Delta +5\text{mm}$

左 (11.23PM)  $\Delta +3\text{mm}$

左 (11.27PM)  $\Delta +2\text{mm}$

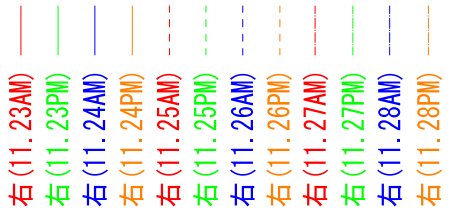
左 (11.25PM)  $\Delta +1\text{mm}$

左 (11.17AM)  $\pm 0\text{mm}$

左 (11.26PM, 11.28PM)  $\Delta -1\text{mm}$

載荷前 右 (11.17AM) ———

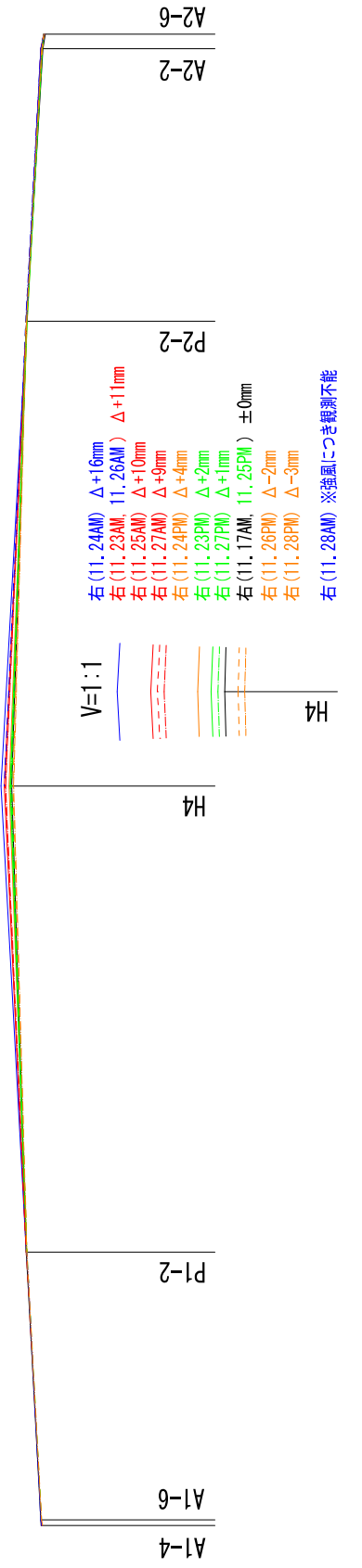
載荷後



(至長島)

V=1:10  
H=1:1000

(至室津)



右 (11.24AM)  $\Delta +16\text{mm}$

右 (11.23AM, 11.26AM)  $\Delta +11\text{mm}$

右 (11.25AM)  $\Delta +10\text{mm}$

右 (11.27AM)  $\Delta +9\text{mm}$

右 (11.24PM)  $\Delta +4\text{mm}$

右 (11.23PM)  $\Delta +2\text{mm}$

右 (11.27PM)  $\Delta +1\text{mm}$

右 (11.17AM, 11.25PM)  $\pm 0\text{mm}$

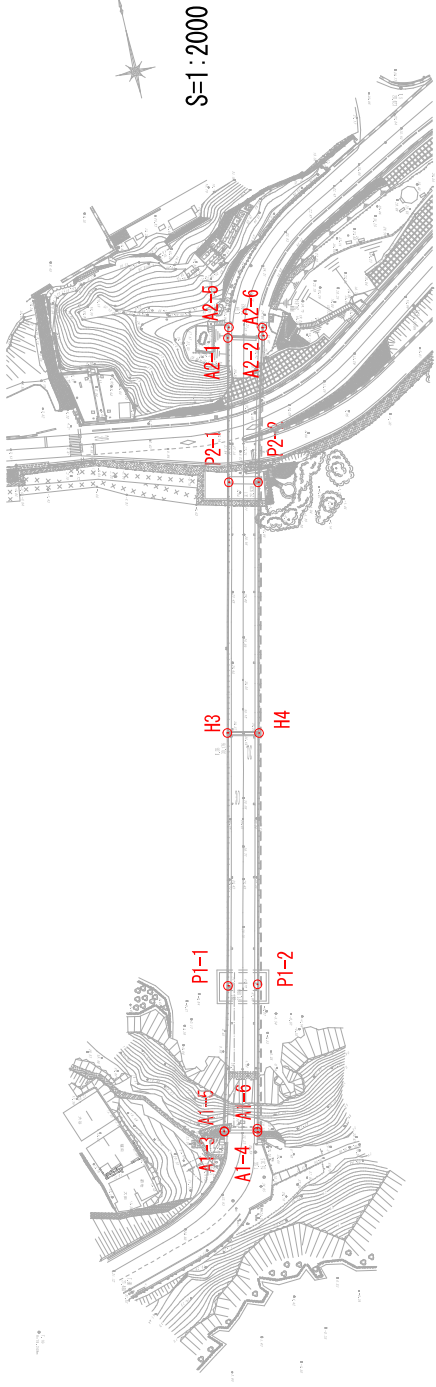
右 (11.26PM)  $\Delta -2\text{mm}$

右 (11.28PM)  $\Delta -3\text{mm}$

右 (11.28AM) ※強風につき観測不能



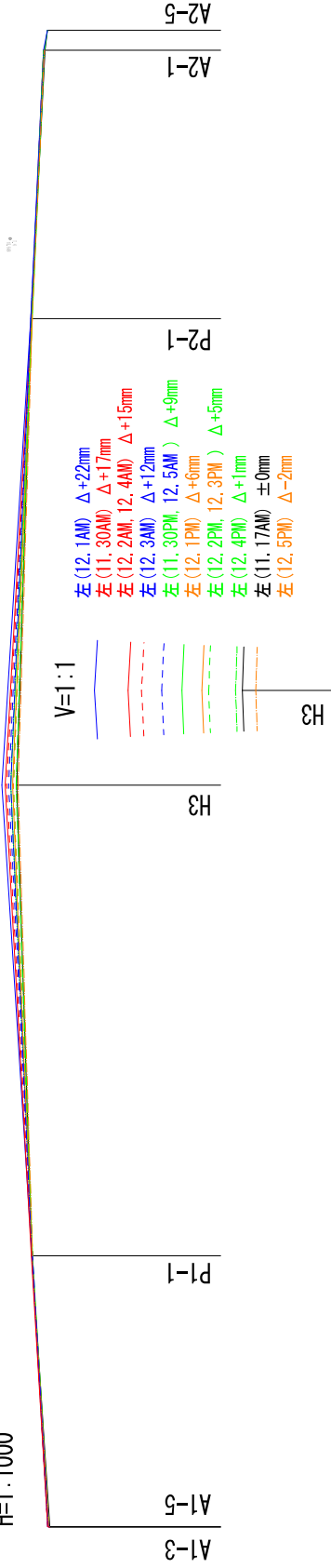
上関大橋動態観測 縦断面図  
令和2年11月30日～12月5日



- 載荷前 ——— 左 (11. 17AM)  
 載荷後 ——— 左 (11. 30AM)  
 ——— 左 (11. 30PM)  
 ——— 左 (12. 1AM)  
 ——— 左 (12. 1PM)  
 - - - 左 (12. 2AM)  
 - - - 左 (12. 2PM)  
 - - - 左 (12. 3AM)  
 - - - 左 (12. 3PM)  
 - - - 左 (12. 4AM)  
 - - - 左 (12. 4PM)  
 - - - 左 (12. 5AM)  
 - - - 左 (12. 5PM)

(至長島)

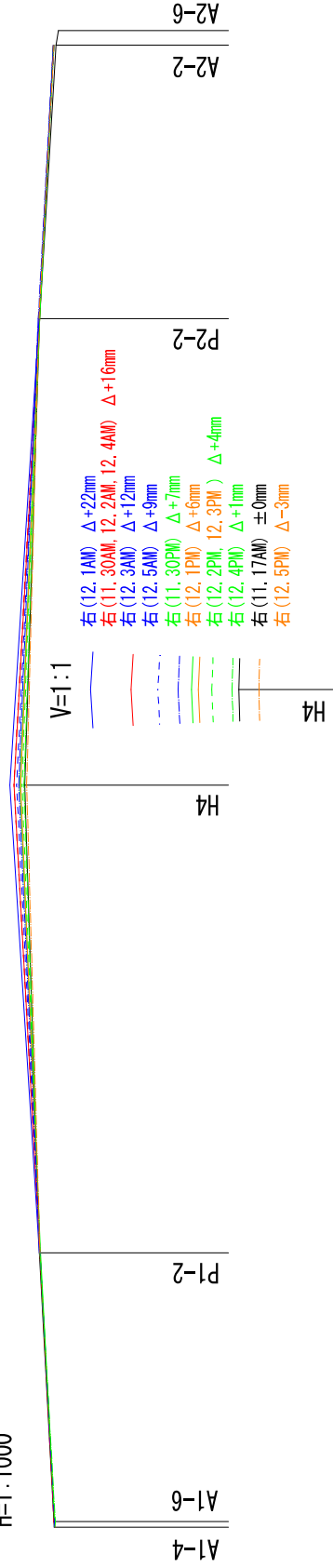
V=1:10  
H=1:1000



- 左 (12. 1AM) Δ+22mm  
 左 (11. 30AM) Δ+17mm  
 左 (12. 2AM, 12. 4AM) Δ+15mm  
 左 (12. 3AM) Δ+12mm  
 左 (11. 30PM, 12. 5AM) Δ+9mm  
 左 (12. 1PM) Δ+6mm  
 左 (12. 2PM, 12. 3PM) Δ+5mm  
 左 (12. 4PM) Δ+1mm  
 左 (11. 17AM) ±0mm  
 左 (12. 5PM) Δ-2mm

(至室津)

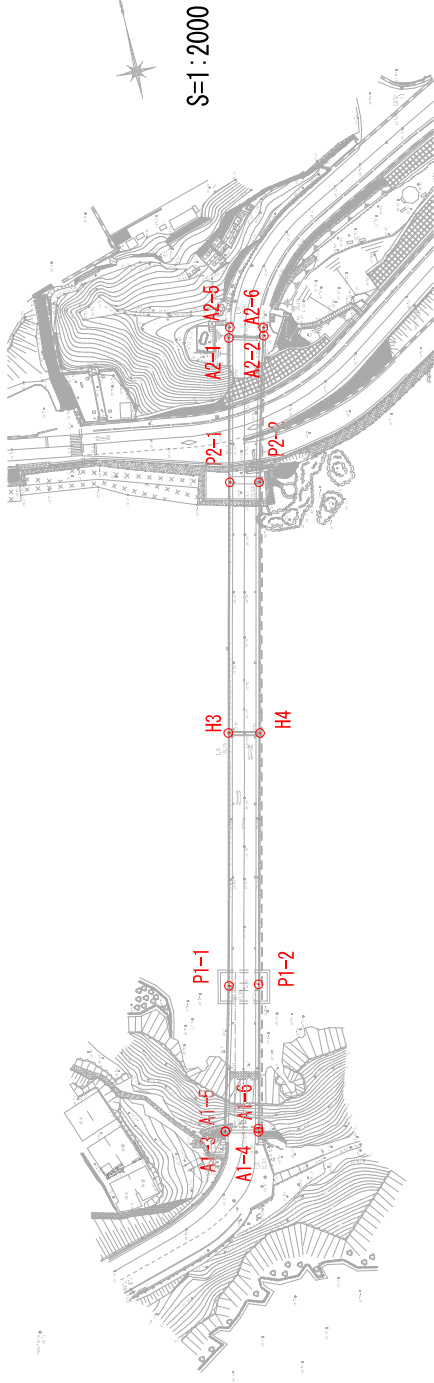
V=1:10  
H=1:1000



- 右 (12. 1AM) Δ+22mm  
 右 (11. 30AM, 12. 2AM, 12. 4AM) Δ+16mm  
 右 (12. 3AM) Δ+12mm  
 右 (12. 5AM) Δ+9mm  
 右 (11. 30PM) Δ+7mm  
 右 (12. 1PM) Δ+6mm  
 右 (12. 2PM, 12. 3PM) Δ+4mm  
 右 (12. 4PM) Δ+1mm  
 右 (11. 17AM) ±0mm  
 右 (12. 5PM) Δ-3mm

- 載荷前 ——— 右 (11. 17AM)  
 載荷後 ——— 右 (11. 30AM)  
 ——— 右 (11. 30PM)  
 ——— 右 (12. 1AM)  
 ——— 右 (12. 1PM)  
 - - - 右 (12. 2AM)  
 - - - 右 (12. 2PM)  
 - - - 右 (12. 3AM)  
 - - - 右 (12. 3PM)  
 - - - 右 (12. 4AM)  
 - - - 右 (12. 4PM)  
 - - - 右 (12. 5AM)  
 - - - 右 (12. 5PM)

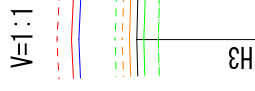
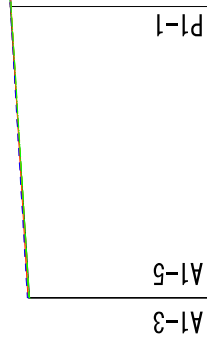
上関大橋動態観測 縦断面図  
令和2年12月7日～12月11日



- 載荷前 ———  
 左 (11. 17AM)  
 載荷後  
 左 (12. 7AM) ———  
 左 (12. 7PM) ———  
 左 (12. 8AM) ———  
 左 (12. 8PM) ———  
 左 (12. 9AM) ———  
 左 (12. 9PM) ———  
 左 (12. 10AM) ———  
 左 (12. 10PM) ———  
 左 (12. 11AM) ———  
 左 (12. 11PM) ———

(至長島)

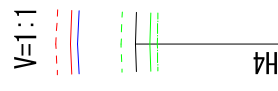
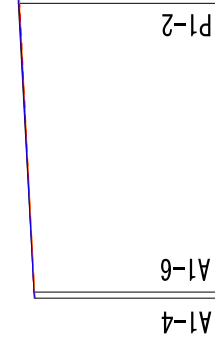
V=1:10  
H=1:1000



- 左 (12. 9AM, 12. 10AM) Δ+11mm  
 左 (12. 7AM) Δ+9mm  
 左 (12. 8AM, 12. 11AM) Δ+8mm  
 左 (12. 9PM) Δ+3mm  
 左 (12. 10PM) Δ+2mm  
 左 (12. 8PM) Δ+1mm  
 左 (11. 17AM) ±0mm  
 左 (12. 7PM) Δ-1mm  
 左 (12. 11PM) Δ-3mm

(至長島)

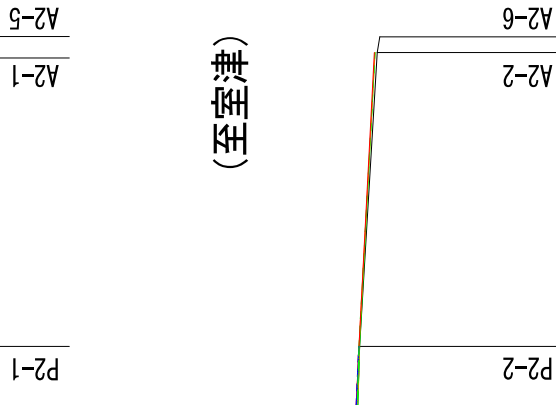
V=1:10  
H=1:1000



- 右 (12. 9AM, 12. 10AM) Δ+11mm  
 右 (12. 7AM, 12. 11AM) Δ+9mm  
 右 (12. 8AM) Δ+8mm  
 右 (12. 9PM, 12. 10PM) Δ+2mm  
 右 (11. 17AM, 12. 8PM) ±0mm  
 右 (12. 7PM) Δ-2mm  
 右 (12. 11PM) Δ-3mm

(至室津)

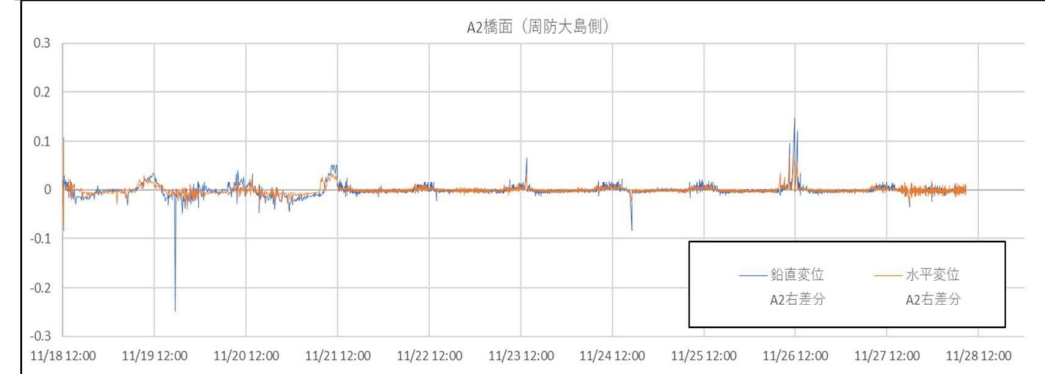
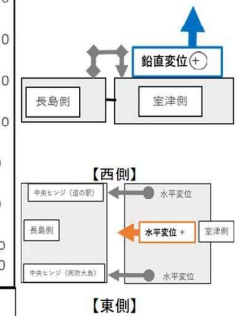
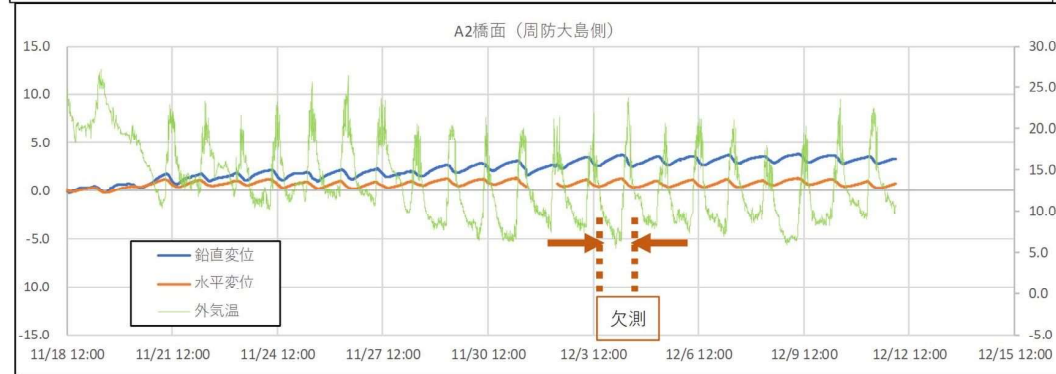
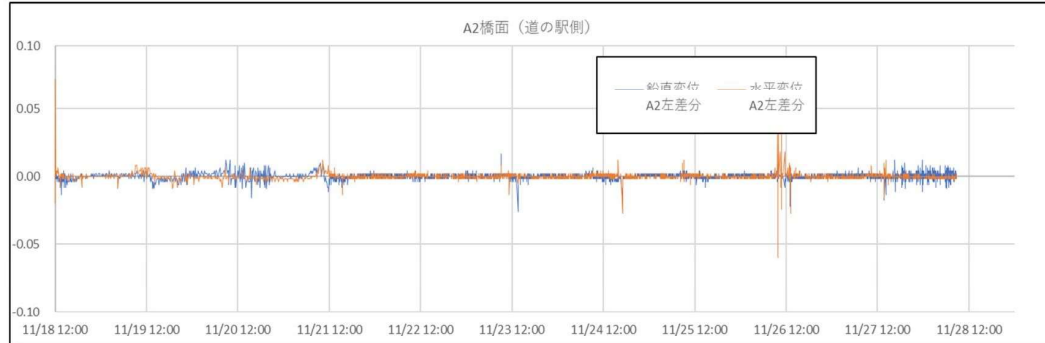
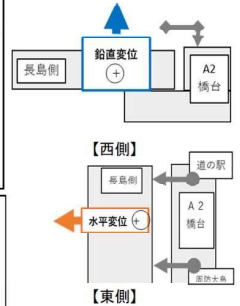
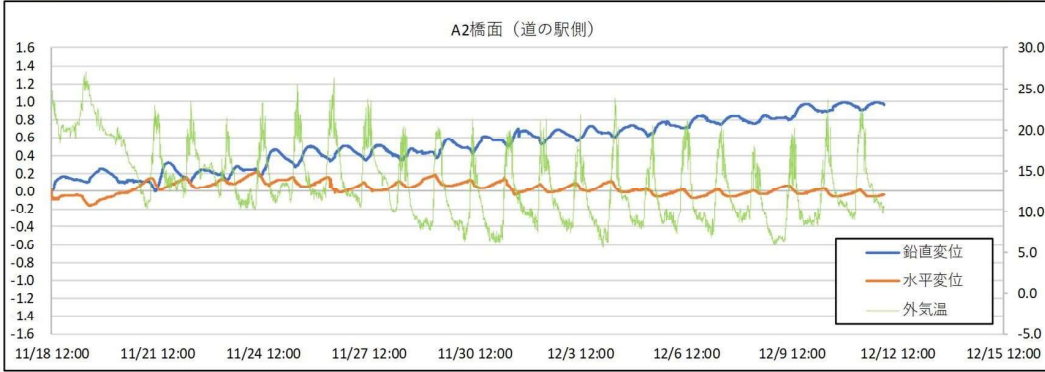
- 載荷前 ———  
 右 (11. 17AM)  
 載荷後  
 右 (12. 7AM) ———  
 右 (12. 7PM) ———  
 右 (12. 8AM) ———  
 右 (12. 8PM) ———  
 右 (12. 9AM) ———  
 右 (12. 9PM) ———  
 右 (12. 10AM) ———  
 右 (12. 10PM) ———  
 右 (12. 11AM) ———  
 右 (12. 11PM) ———

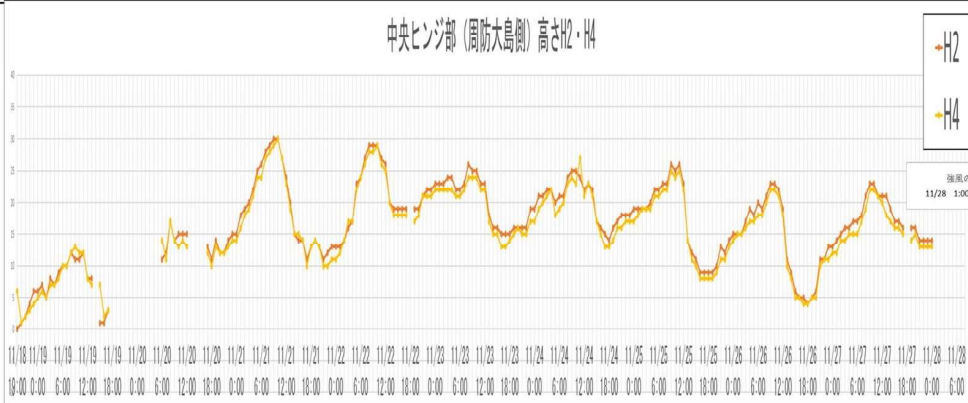
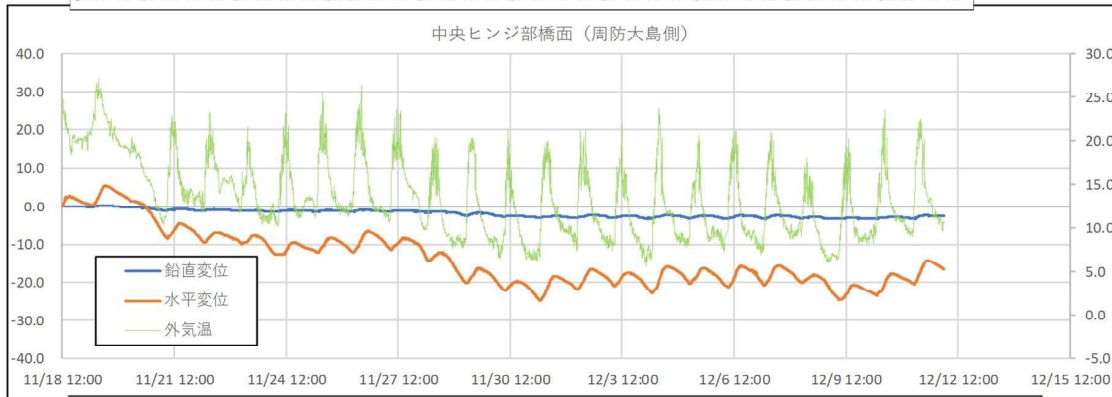
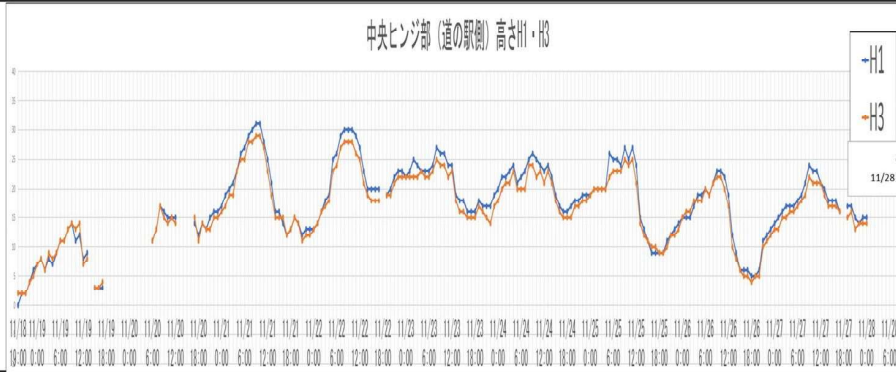
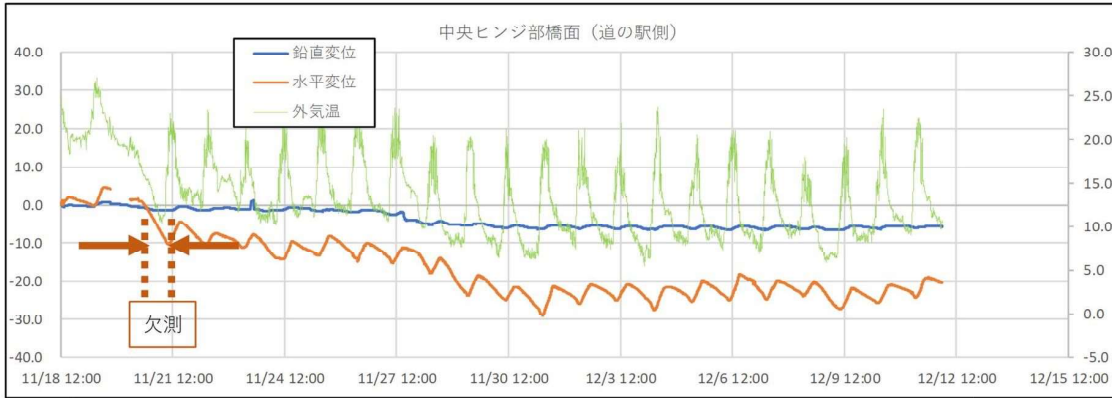


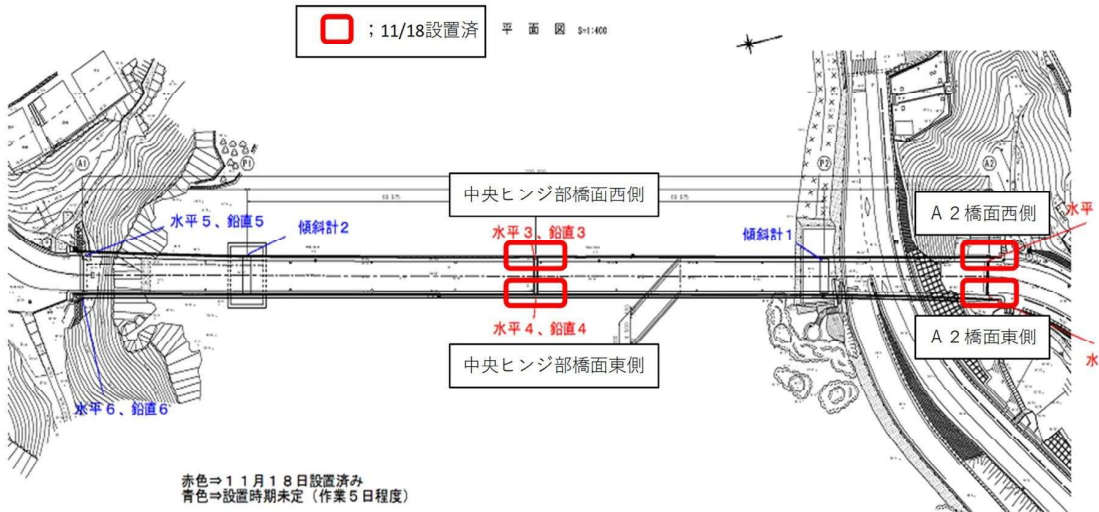
## 変位・高さ計測

変位 (mm)

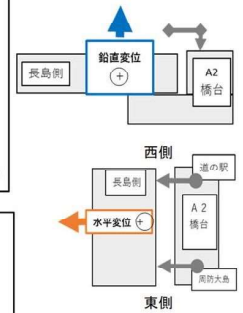
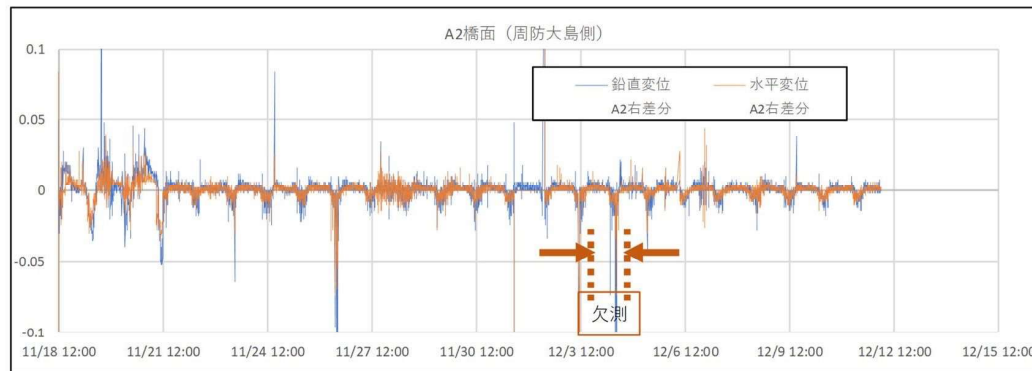
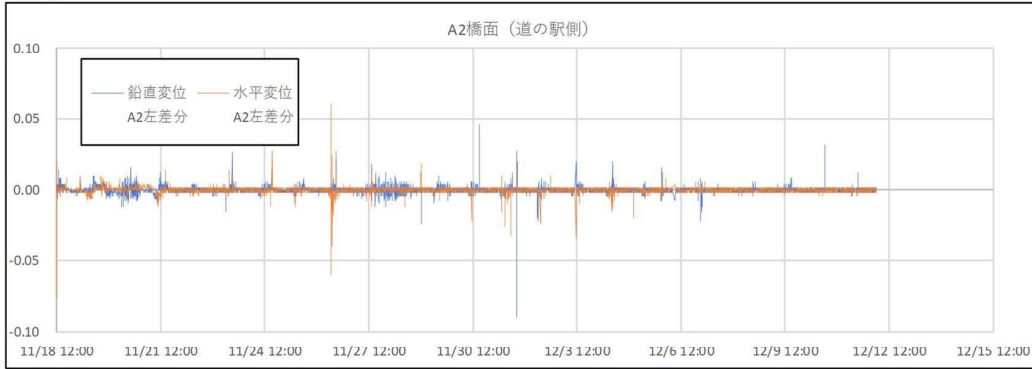
気温 (°C)



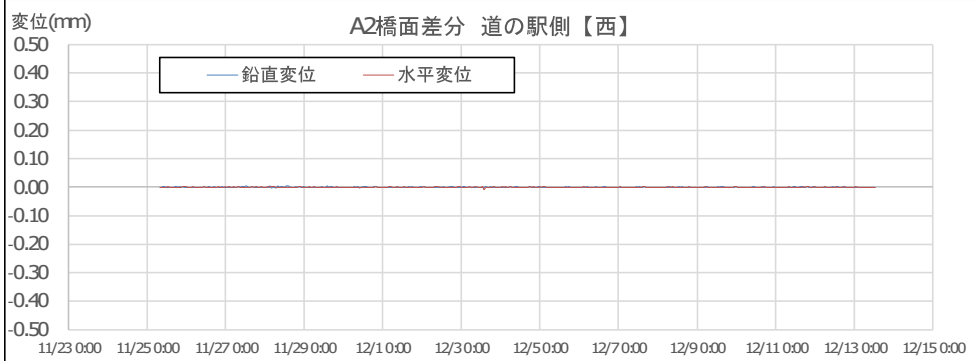
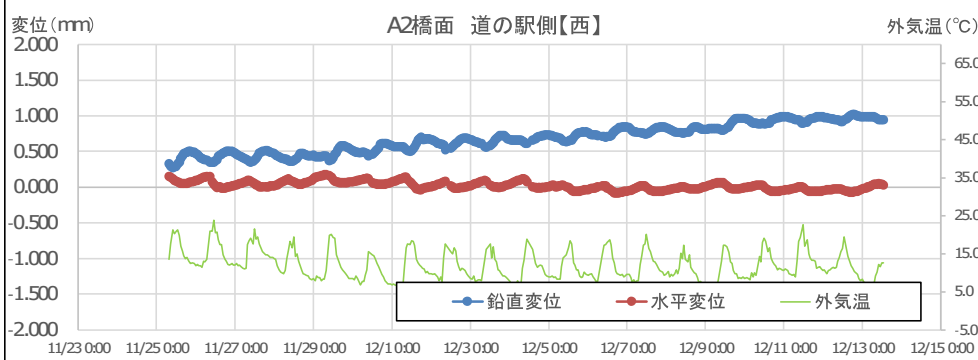
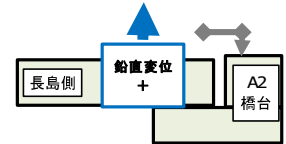
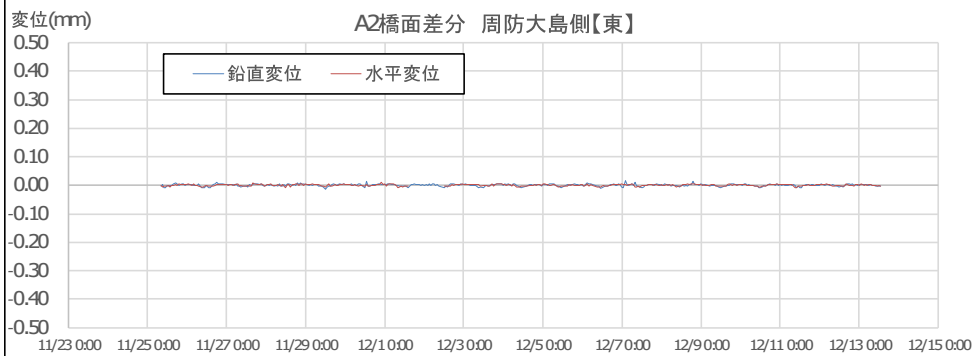
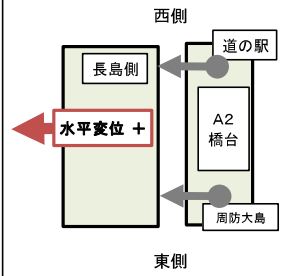
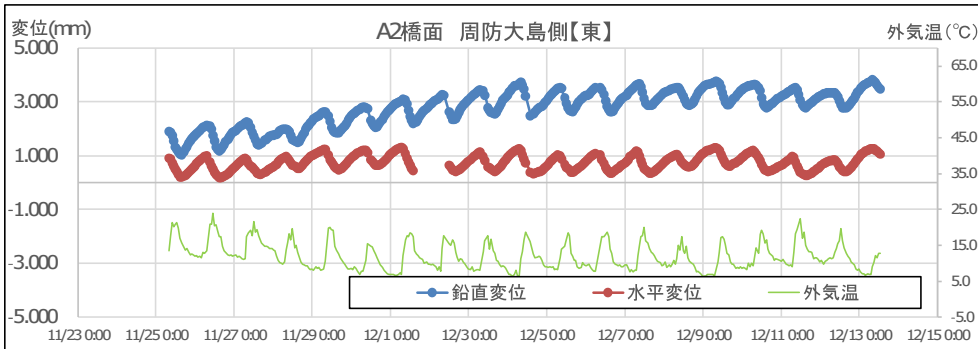




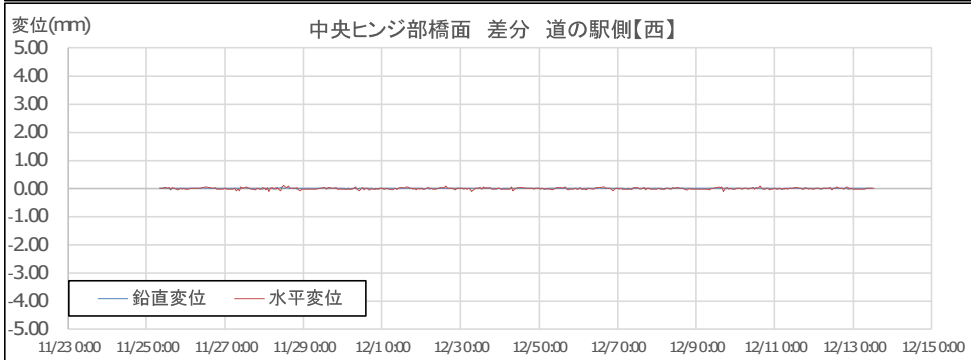
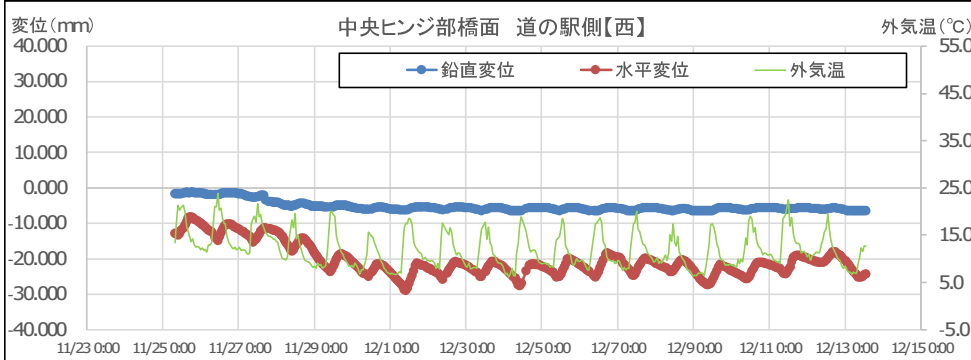
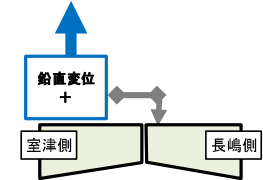
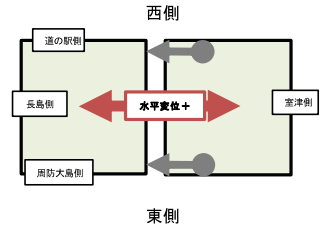
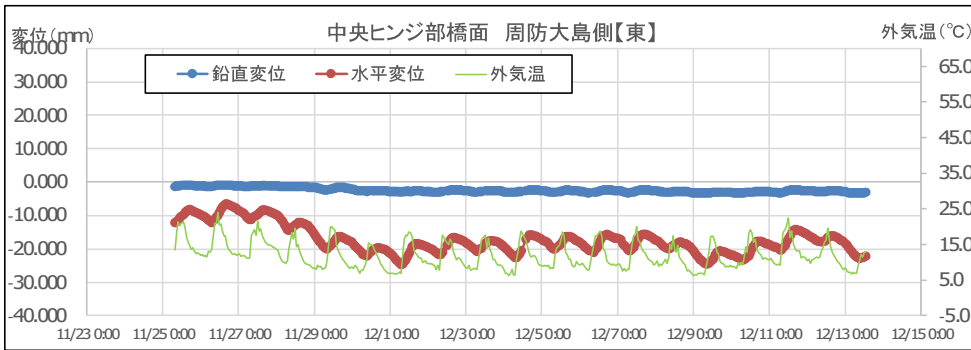
変位 (mm)



最新日時: 2020/12/13 13:00

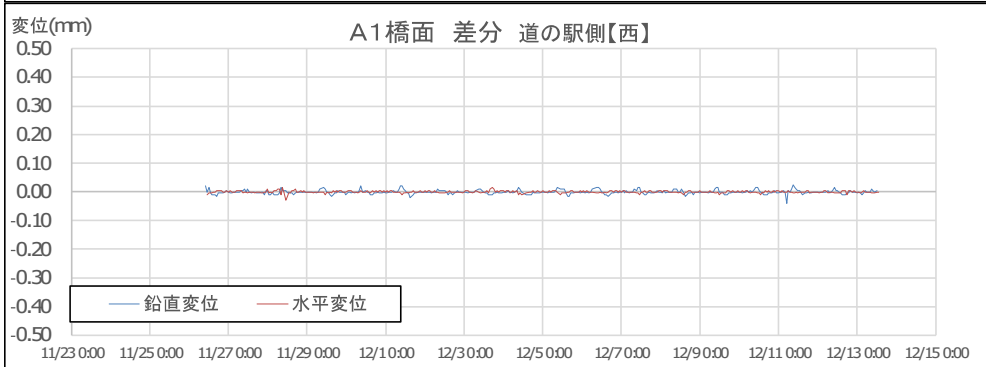
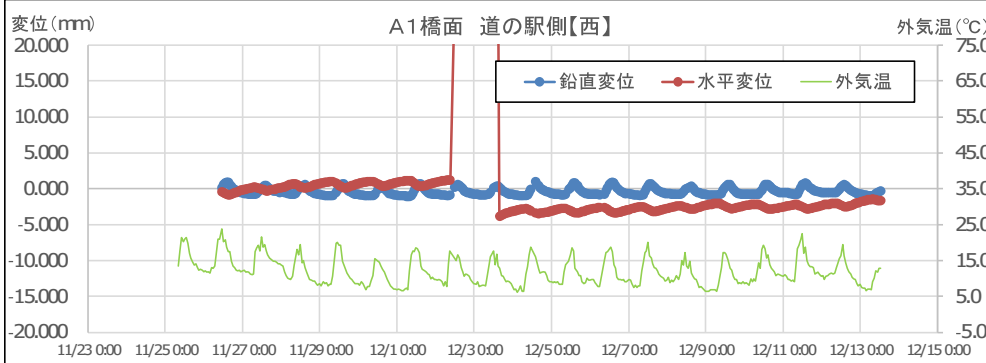
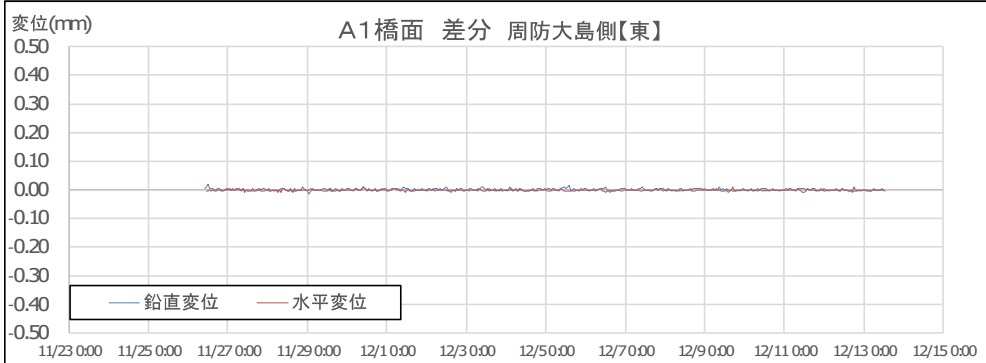
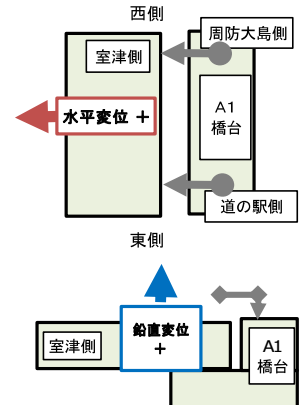
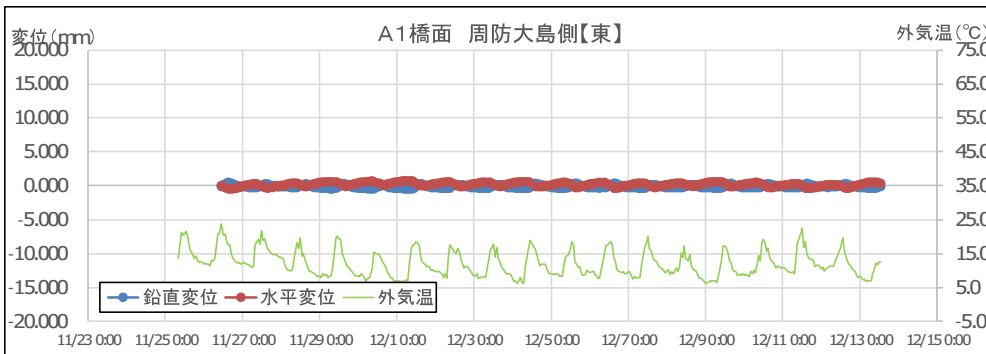


最新日時：2020/12/13 13:00

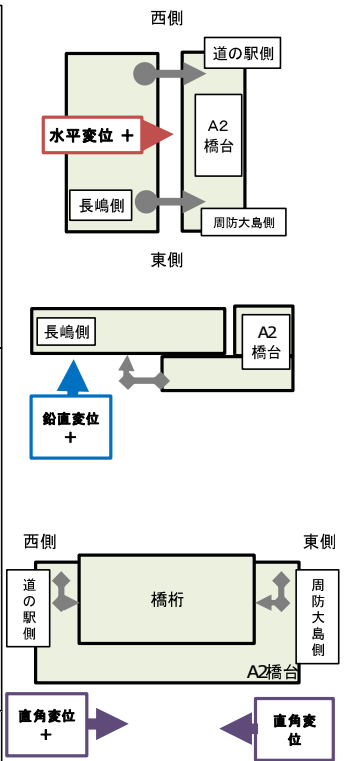
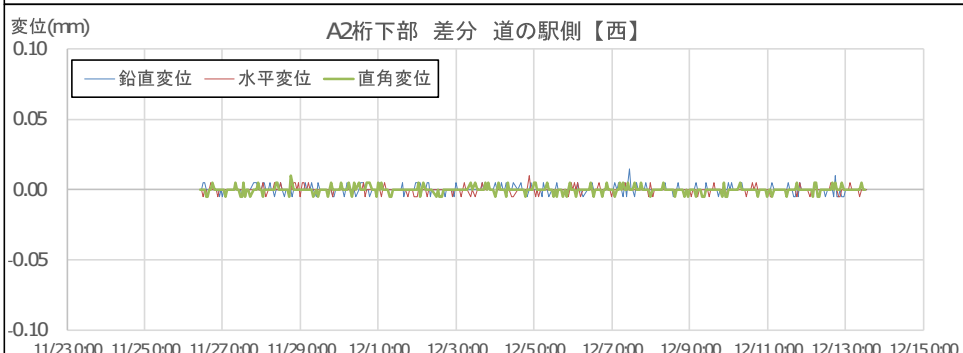
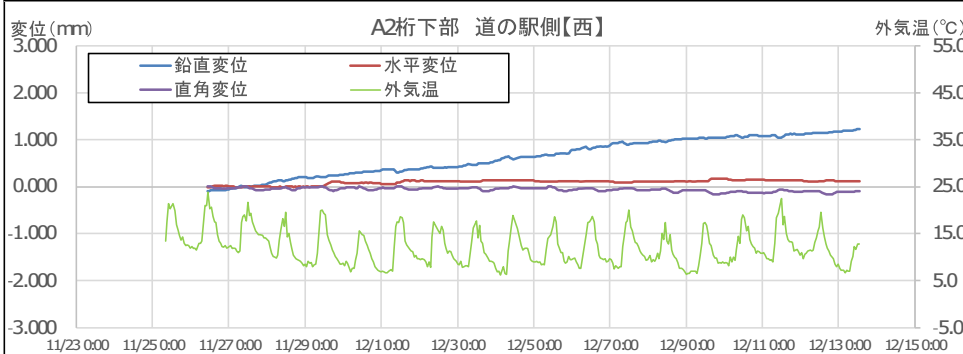
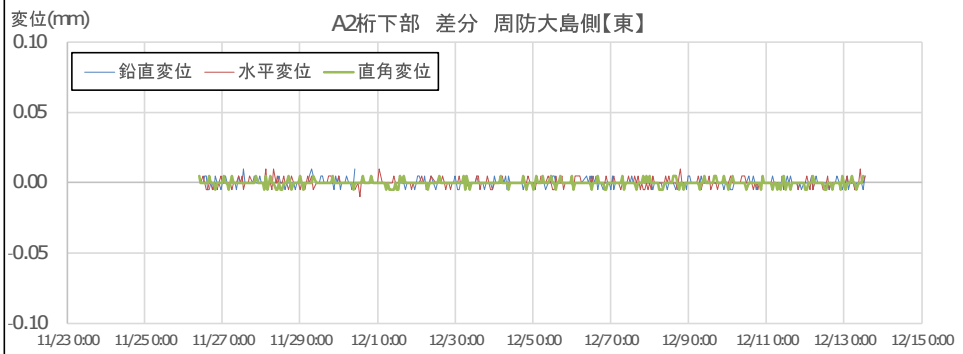
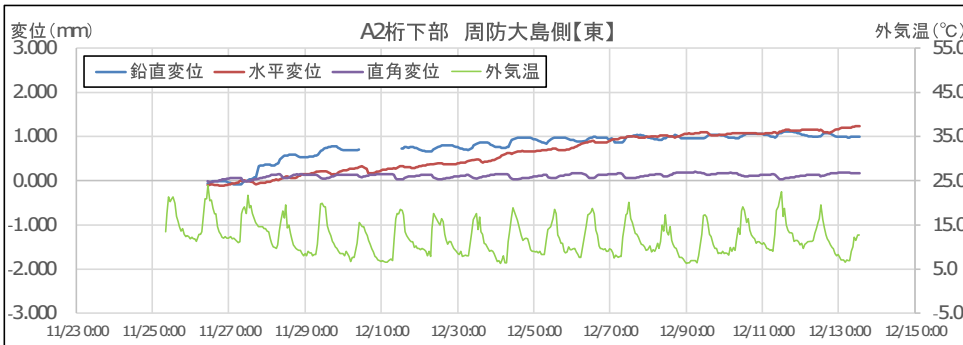




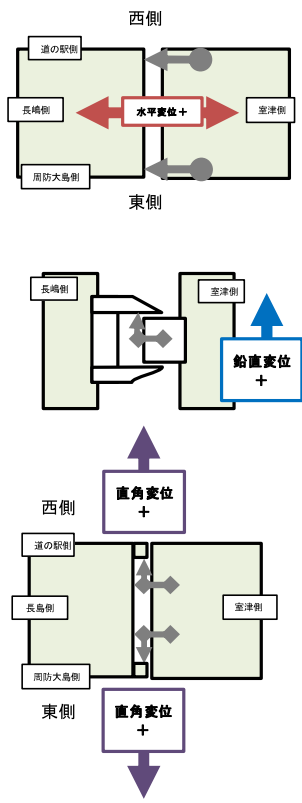
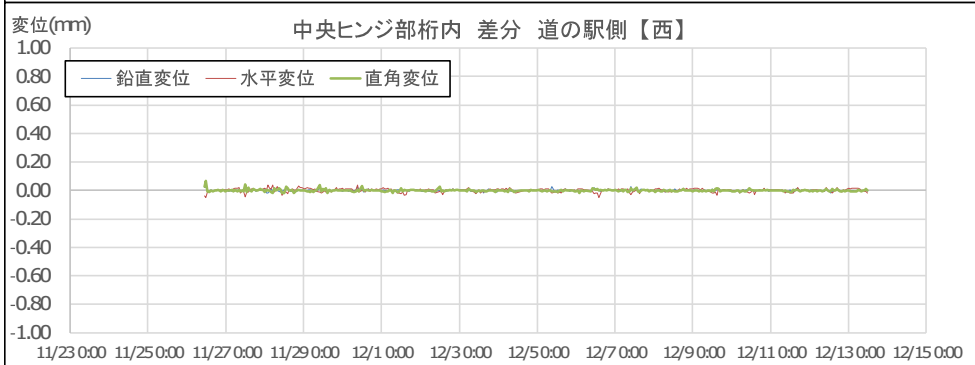
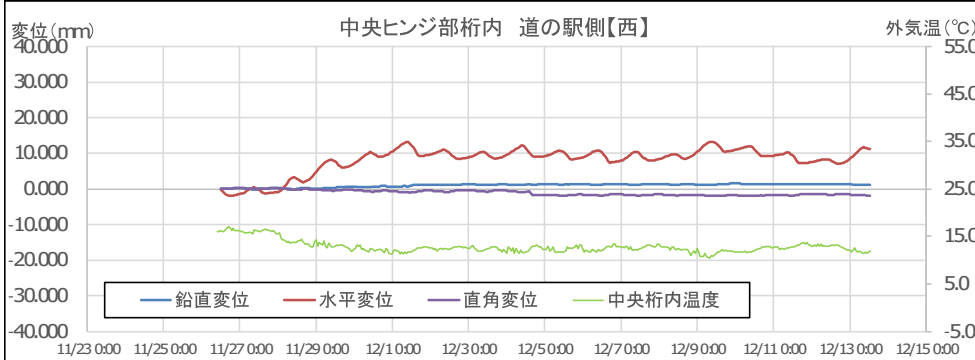
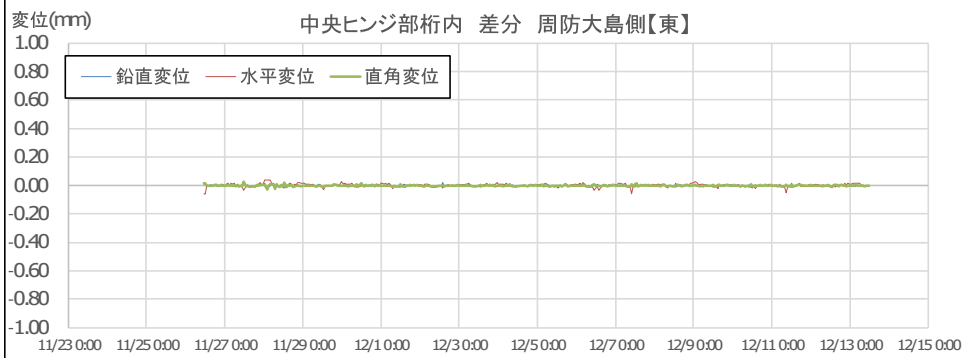
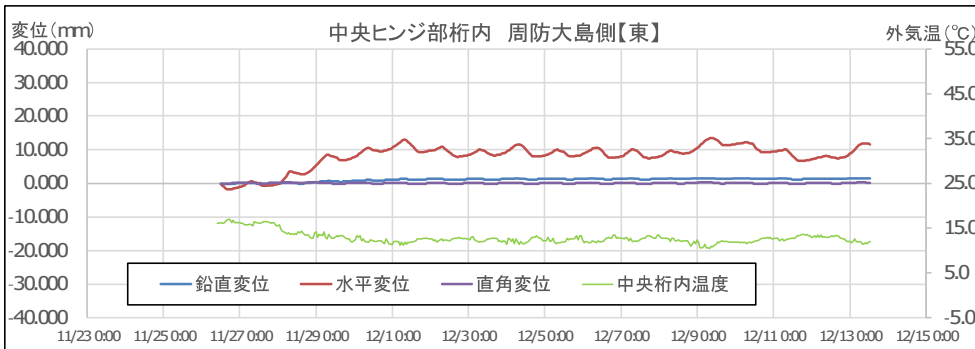
最新日時; 2020/12/13 13:00



最新日時; 2020/12/13 13:00



最新日時: 2020/12/13 13:00



最新日時; 2020/12/13 13:00

